

**North Monterey County Water**

# **Total Water Management**

**Evaluating Options for a Reliable Water Future**

Monterey Peninsula Water  
Management District

U.S. Bureau of Reclamation

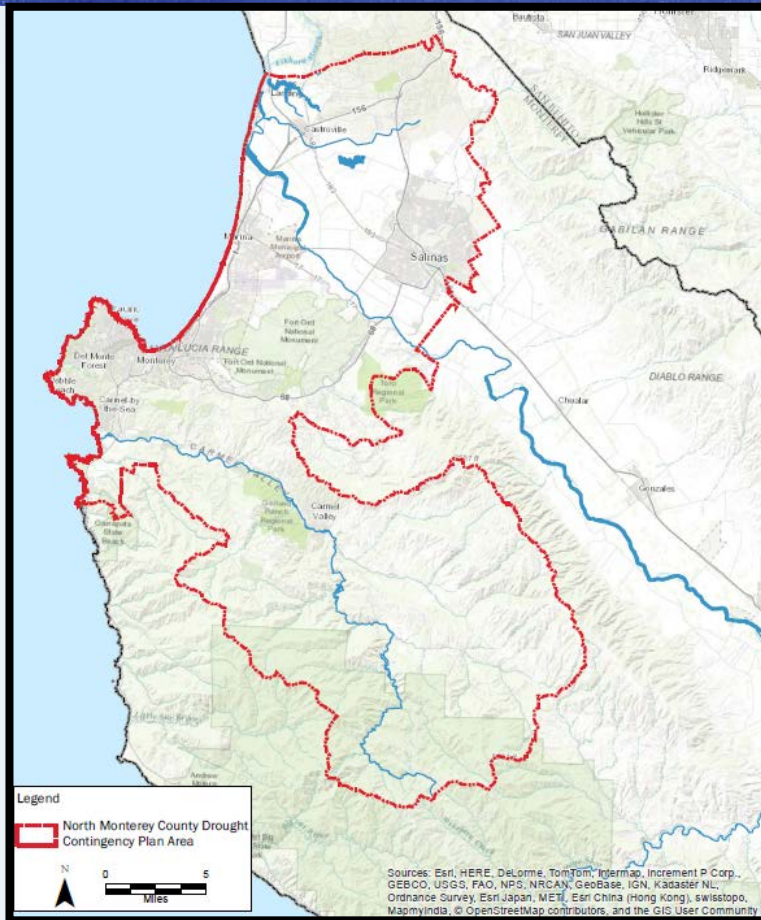
# **Interrelationships Between: North Monterey County DCP Salinas & Carmel River Basins Study**

Mike Savage, Brown and Caldwell, Consultant Team Member for DCP Plan of Study

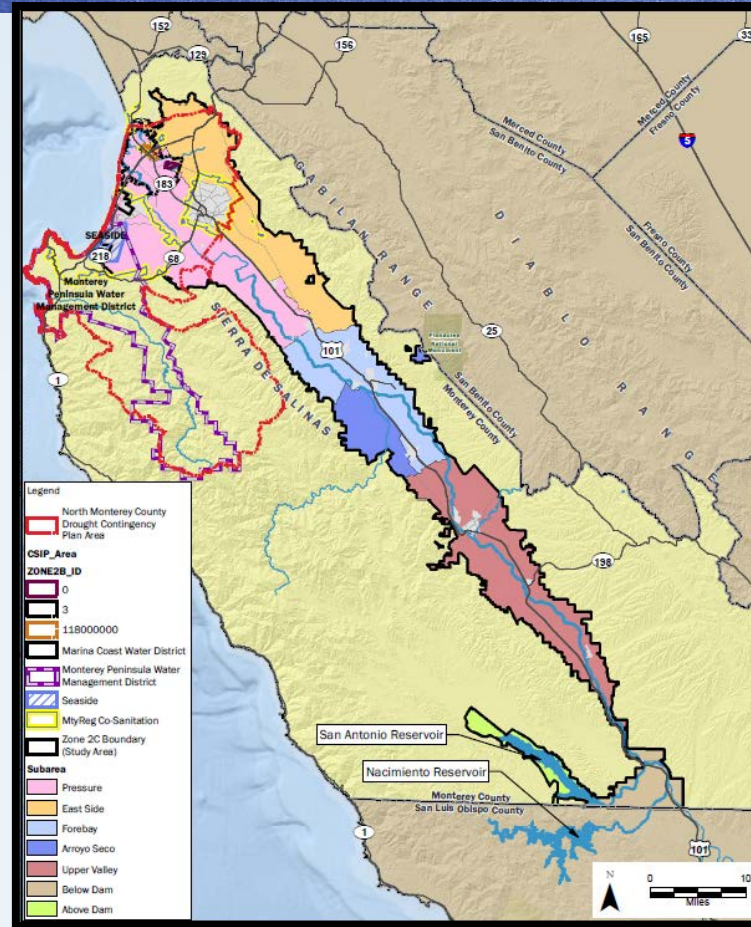
# Geographic Overlap of Studies

Monterey Peninsula Water Management District

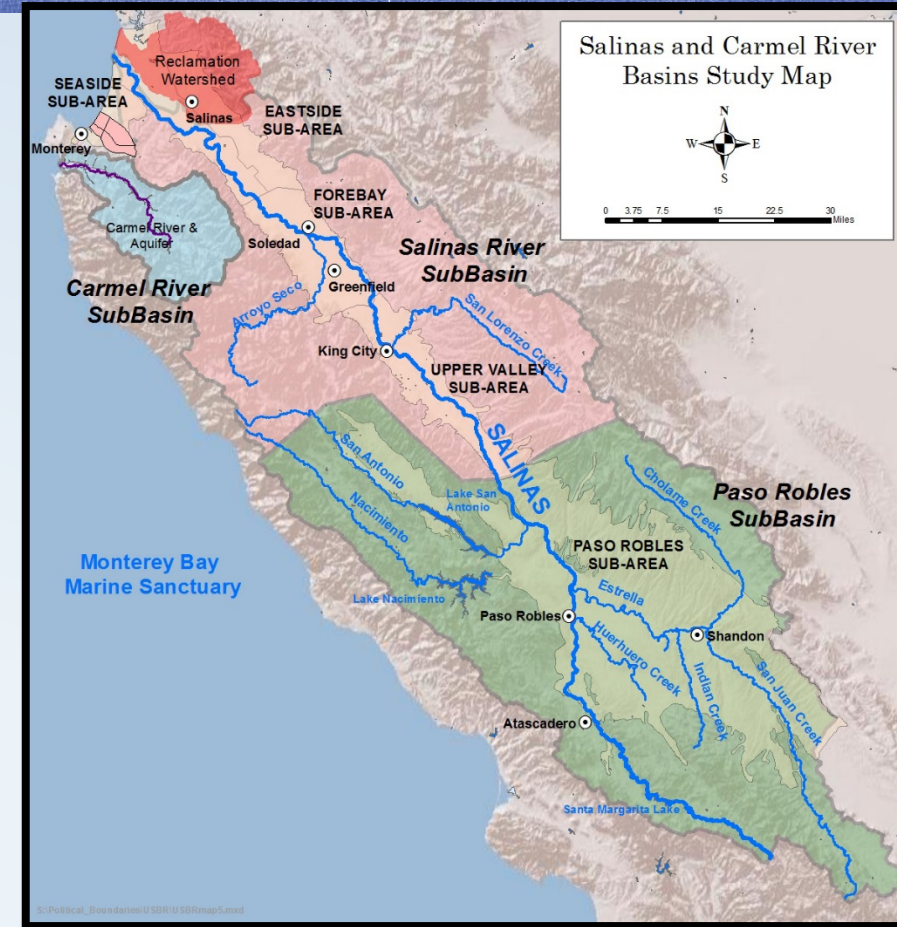
U.S. Bureau of Reclamation



North Monterey County Drought Contingency Plan (DCP)



Salinas Valley Integrated Hydrologic Model & DCP

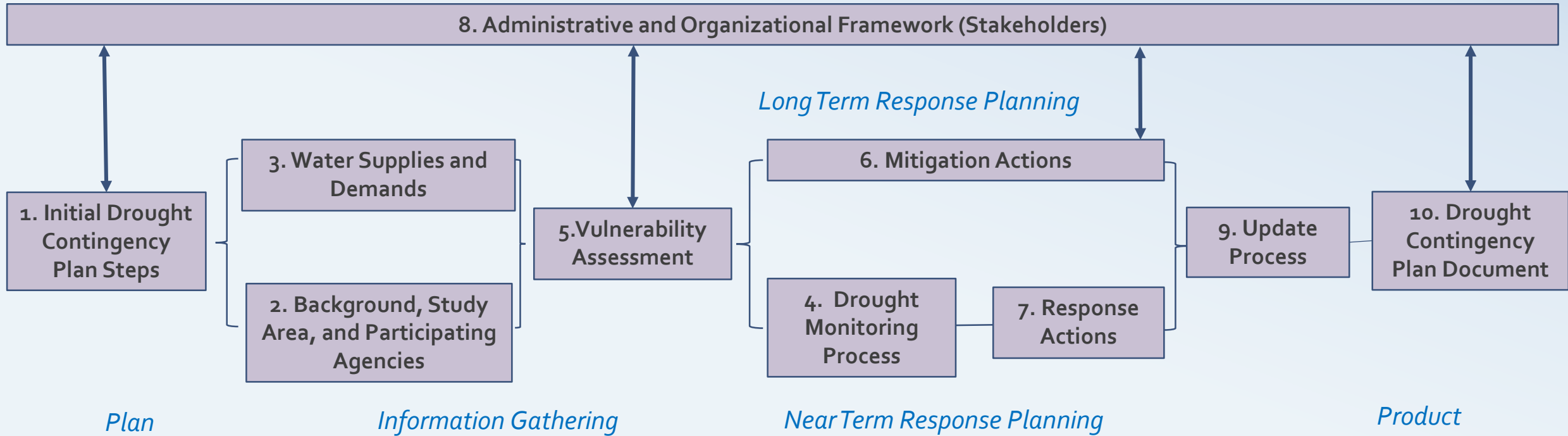


Salinas and Carmel River Basins Study (Basin Study)

# North Monterey County Drought Contingency Plan

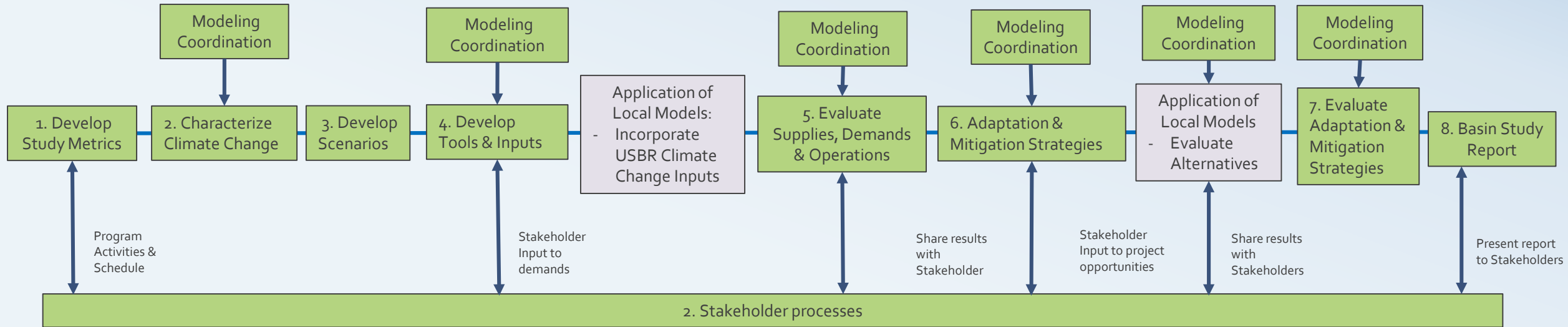
Monterey Peninsula Water Management District

U.S. Bureau of Reclamation



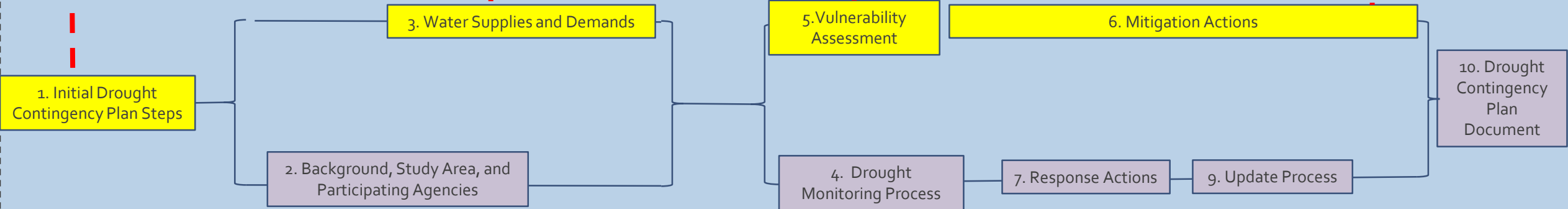
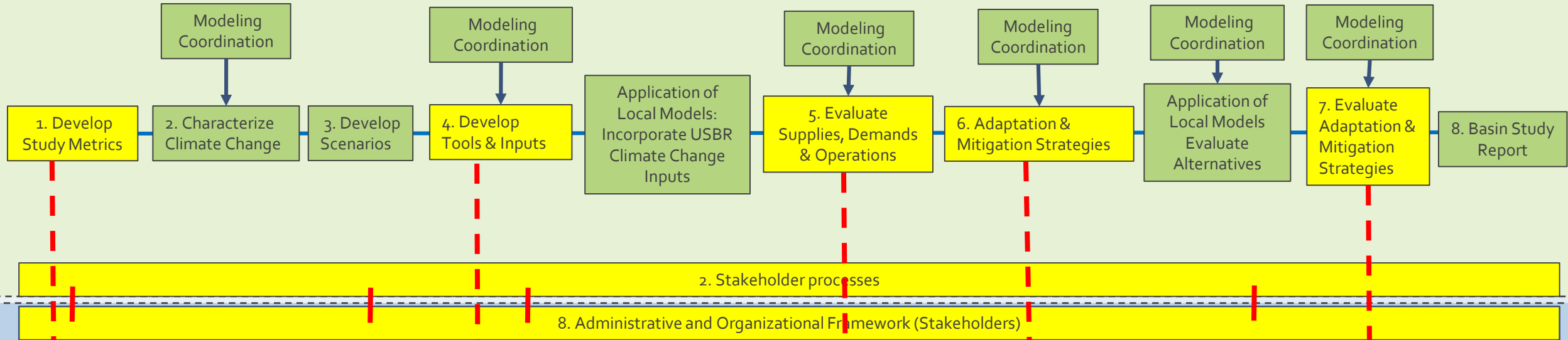
Note:  
Task Numbers based on DCP Scope of Work  
Reorganized into a workplan sequence

# Salinas and Carmel River Basin Study



# Key Points of Linkage between Studies

## Salinas and Carmel Rivers Basins Study



## North Monterey County Drought Contingency Plan

# DCP Efforts Interface Basin Study

- Coordinate definition of need (Vulnerability Assessment)
- Identify “mitigation actions” that overlap study areas
- Coordinate public outreach process when possible between both activities; meetings, social media outreach tools, and associated stakeholder contact database management software.
- Webpage management could address both Reclamation and local participating agency requirements.
- Coordinate technical products sharing with public outreach processes between the DCP and the Basin Study.